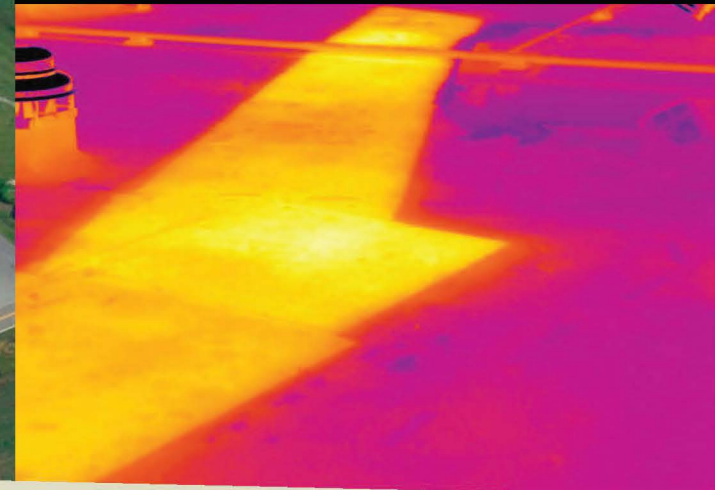




BUILDING TECH
INSPECTION SERVICES LLC

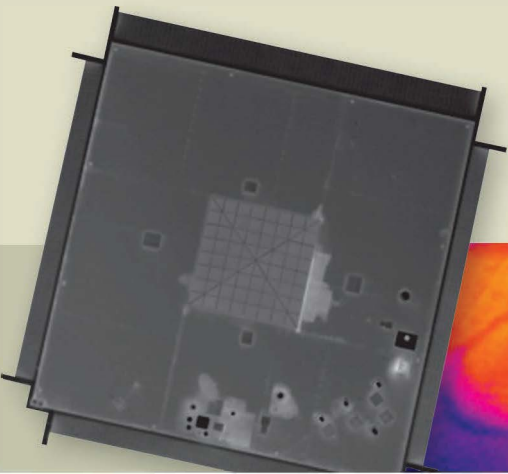


RoofScanIR™ is a National Network of contract thermographers that have been well-trained in the application of infrared scanning of flat and low-sloped roofs.

All the network members are experienced building technicians and Certified Infrared Thermographers.

The thermographers all own their own companies and are members in good-standing in the RoofScanIR™ Network.

aerial surveys also available



BUILDING TECH
INSPECTION SERVICES LLC

BUILDINGTECH INSPECTION SERVICES LLC
NORTH ARLINGTON NJ 07031
COMPANY OF HIGHLY QUALIFIED THERMOGRAPHERS

Info@InfraredRoofInspectors.com
InfraredRoofInspectors.com

Schedule an Infrared Roof Scan Inspection Today!

888-4SCANIR

CONTACT US FOR
A QUOTE TODAY!



We **detect** and **document** **roof moisture** with infrared thermography



national accounts nationwide **service**





Why use Infrared Thermography on Flat Roofs?

Infrared imaging is a proven method for identifying and defining moisture problems in your roof. This will enable you to develop a more sophisticated roof asset management program, make more informed decisions regarding roof budgets and will help you plan repairs.

By using infrared thermography, we find the trapped moisture and mark the wet areas on the roof with marking paint, so that roof repairs can be made surgically - without the tremendous expense of replacing the entire roof.

This can save you a tremendous amount of money!

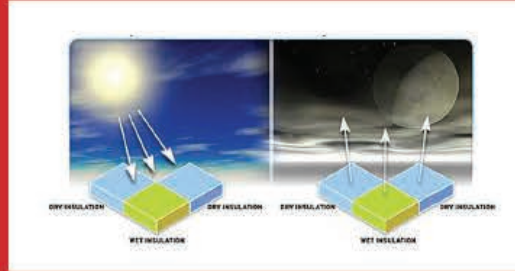
Our National Company's Resources are behind each Member Contractor

We have expert roof consultants on staff that teach the thermographers the best way of performing the job, and producing the report. This is all backed-up by our satisfaction guarantee.

RoofScanIR™ Service here's how it works...

During the day, the sun radiates energy onto the roof and into the roof substrate, and then at night, the roof radiates the heat back into outer space.

This is called radiational cooling. Areas of the roof that are of a higher mass (wet) retain this heat longer than that of the lower mass (dry) areas.



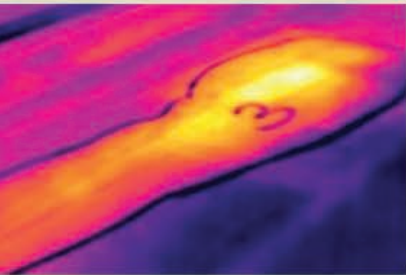
Infrared imagers can detect this heat and "see" the warmer, higher mass areas, during the "window" of uneven heat dissipation. Heat loss and other IR services can be performed at the same time.



Why RoofScanIR™?

We create detailed, professional reports documenting the entrained roof moisture, the same way - everywhere in the USA.

We designed the infrared reports so that Roof Professionals will be able to use the information to verify the wet areas and write specifications to repair the roof.



professional, **digital & printed** standardized reporting